



SOUTHERN BROTHERS TRACKING

Unit 14, Hydro Park, 1 Hydro St, Stickland, Cape Town.

Technical: Calvin +27 81 734 8575

Bookings/Accounts: Daryl: +27 76 147 7641

info@southernbrothers.co.za

www.southernbrothers.co.za



Founded in 2013, Southern Brothers Tracking continue to go from strength to strength. Offering a diverse inventory of vehicles and equipment and providing user friendly camera platforms to help you achieve the shots that you are looking for.

Southern Brothers specialise in challenging terrain, with a wealth of experience throughout Africa including amongst others the Namibian Dunes, Tankwa Desert Plains, Atlantis Dunes and the Cederberg Mountains...

Equipped with ready-to-go solutions and a strong emphasis on safety, all our vehicles are supplied with harnesses and rigging, along with custom fitted auxiliary equipment including Jib Arms, Hard Mounts, Height Adjustable, Rotating Vibration Isolators, Wireless Communications and Control Mounts.

With an awesome list of action-packed productions under our belt such as: The Mummy, Maze Runner III, Troy, Resident Evil, Monster Hunter and Black Sails (To name but a few.) We pride ourselves in the R&D and engineering that has gone into each one of our vehicles and we continue to build lasting relationships with all the film crews and production houses we work with.

Southern Brothers provide full support setups and experienced teams to assist in accelerating rigging and assembly setup time on location.

To find out more about us or to get in touch, visit our website at: www.southernbrothers.co.za or check out our Facebook page: Southern Brothers Tracking, to see our vehicles and crew in action.

KAWASAKI TERYX ATV



The Kawasaki Teryx ATV offers the ultimate tracking experience on all terrain. With four-wheel drive capabilities offering both high and low range options along with its full diff lock, it can tackle various challenging locations. The vehicle is fitted with an aftermarket, fully adjustable suspension and power steering system. Removable, front and rear platforms extend the workspace and allow for various camera setups. The Teryx comes complete with a removable central crane column, that is capable of carrying our 20' Maxi Predator III or the Techno 15' crane systems. There are various eye bolt harness points around the vehicle allowing crew to lock off, along with a roll bar for additional safety. Four seats come as standard, the rear of which are reversible and removable.



The Teryx is truly unrivalled in its class and will get you that shot that you may of otherwise thought impossible. Generally supplied as a plug and play setup, which includes the following: Wireless Communications, Precision Crane System, GFM Vibration Isolator, HD Monitors, Safety Harnesses and Control Mounts.

Now offered with or without a canvass roof and windshield option...



SOUTHERN BROTHERS TRACKING

Unit 14, Hydro Park, 1 Hydro St, Stickland, Cape Town.

Technical: Calvin: +27 81 734 8575

Bookings/Accounts: Daryl: +27 76 147 7641

info@southernbrothers.co.za

www.southernbrothers.co.za



CRICKET TRACKING QUAD



400CC Quad Bike with custom chassis, offering various grip friendly rigging points. Can be used for Hand-Held, Steadicam and Hard Mount setups. With on and off-road capabilities, the Cricket is a compact and versatile machine. Offering, front and back, height adjustable, rotating, GFM spring rig, with hard mount, stabilised head capability.



SOUTHERN BROTHERS TRACKING

Unit 14, Hydro Park, 1 Hydro St, Stickland, Cape Town.

Technical: Calvin: +27 81 734 8575

Bookings/Accounts: Daryl: +27 76 147 7641

info@southernbrothers.co.za

www.southernbrothers.co.za



AUGUSTA ELECTRIC CART



Custom built electric camera platform, silent with zero emissions. Suitable for studio and outdoor work. Supplied on easy loader trailer. The cart comes standard with a 48.5 mm starter rail and various Euro rigging options around the platform.

This vehicle can be dry hired or supplied with an operator and support vehicle. The vehicles On-Set crate includes: harnesses, carabiners, daisy chains and battery charger.

Small, versatile and quick off the line, Augusta is a great little platform requiring very little area to turn in and various camera setup options.



SOUTHERN BROTHERS TRACKING

Unit 14, Hydro Park, 1 Hydro St, Stickland, Cape Town.

Technical: Calvin: +27 81 734 8575

Bookings/Accounts: Daryl: +27 76 147 7641

info@southernbrothers.co.za

www.southernbrothers.co.za



MERCEDES SMART CAR



Compact and quick off the line, with automatic and tip-tronic gearing options. Featuring, all round air ride suspension and removable front and back platforms .

Can carry the Predator Maxi III Jib Arm and Motocrane System. Various camera setups are available on the vehicle, to include Hard Mount and Handheld options . Supplied with Additional Seats, Control Mounts and Safety Equipment.

The Smart Car is fully licenced and insured to operate on national roads.



SOUTHERN BROTHERS TRACKING

Unit 14, Hydro Park, 1 Hydro St, Stickland, Cape Town.

Technical: Calvin: +27 81 734 8575

Bookings/Accounts: Daryl: +27 76 147 7641

info@southernbrothers.co.za

www.southernbrothers.co.za



FORD F250 4x4 DOUBLE CAB



A strong, reliable, double cab, 4X4, tracking and support vehicle. With a custom aftermarket suspension system, giving the F250 superior ground clearance and traction capabilities.

Fitted with our 20' Predator Crane System it can act as a mobile crane base for A-frame, free drive and static work on all terrain. The rear cab has been converted into an operator's station with ample space and rigging points for two crew, monitors and other ancillary equipment. Front rigging points allow for a generator to be carried on board.

The Ford F250 also has amongst others a snorkel air system, custom height adjustable tow bar and canvas VT tent for the load bed. Various Euro starter points around the vehicle allow for custom rigging, various hard mount camera setups and lighting rigs.

Being able to tow up to 4000kg the F250 is a true work-horse of a vehicle. It is very popular amongst clients and crew alike and always an asset to have on set.



SOUTHERN BROTHERS TRACKING

Unit 14, Hydro Park, 1 Hydro St, Stickland, Cape Town.

Technical: Calvin: +27 81 734 8575

Bookings/Accounts: Daryl: +27 76 147 7641

info@southernbrothers.co.za

www.southernbrothers.co.za



OPEL TIGRA PLATE VEHICLE



Our Tigra Plate vehicle offers both stabilised and hard-mount rigging options with lens heights from 1100mm to 2800mm. She has an on-board power supply (12v & 240v) for ancillary equipment as well as ample boot space for additional batteries. Super smooth suspension and wider profile tyres allow for speeds up to 140 km/h on various prepared surfaces. The Tigra is fully licenced and insured to operate on national roads.



SOUTHERN BROTHERS TRACKING

Unit 14, Hydro Park, 1 Hydro St, Stickland, Cape Town.

Technical: Calvin: +27 81 734 8575

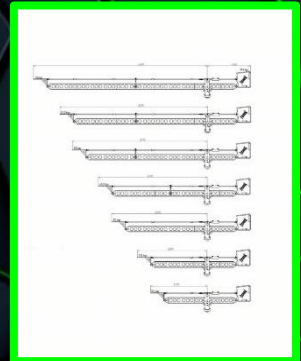
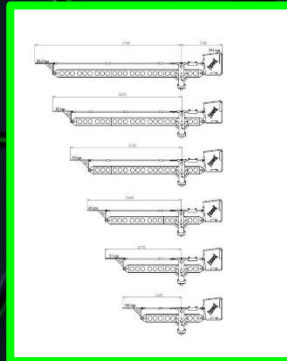
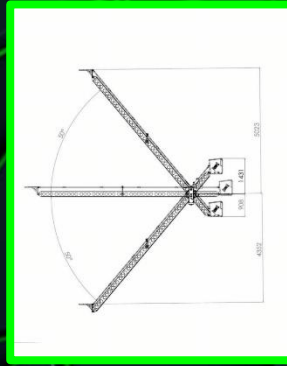
Bookings/Accounts: Daryl: +27 76 147 7641

info@southernbrothers.co.za

www.southernbrothers.co.za



MAXI PREDATOR III CRANE SYSTEM



The Predator is custom designed for tracking in the harsh African environment and has been well received across the board. Its simple lightweight modular design makes it portable and mobile. It is able to achieve up to 20 Foot in length at full extension. Supplied on trolley for easy transport and manoeuvrability. Can be dry-hired separate from tracking platform. (Base supplied) We have removed all cables and support structure on the boom as they aren't necessary on our Predator.

- Constructed from aluminium, stainless steel, brass, nylon & high-quality rubber.
- Powder coated and anodized finishes.
- Stable rigid arm.
- Suited to fit most dollies.
- Interchangeable extensions.
- Fast setup.
- Perfect tracking arm.
- Suited to carry a remote head.
- No cables necessary



SOUTHERN BROTHERS TRACKING

Unit 14, Hydro Park, 1 Hydro St, Stickland, Cape Town.

Technical: Calvin: +27 81 734 8575

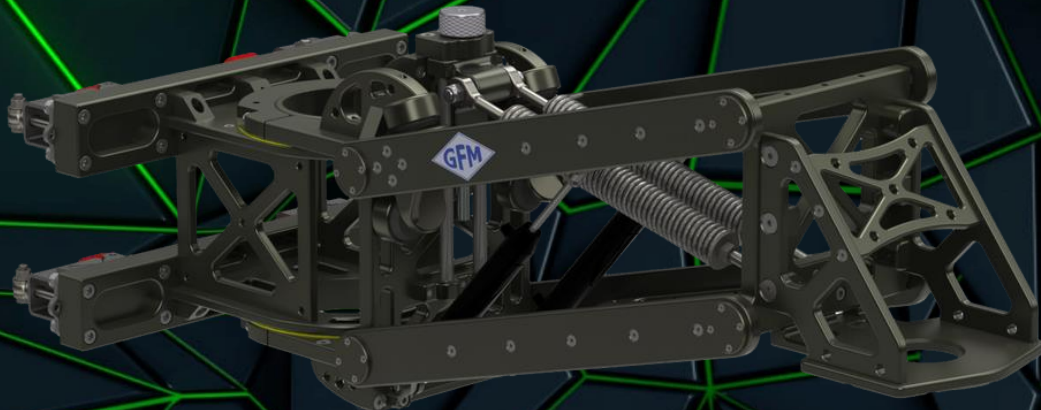
Bookings/Accounts: Daryl: +27 76 147 7641

info@southernbrothers.co.za

www.southernbrothers.co.za



GFM MAXI SHOCK ABSORBER



- Weight: 41KG / 90Lbs
- Max Payload: 100Kg / 220Lbs
- Temperature Range: -20 to 50 Degrees Celsius
- Spring Range: 30cm / 11"
- Dimensions: L 103cm X W 26cm X H 40cm

For use with gyro stabilized heads to reduce high & low frequency vibrations and hard impact shocks during high-speed chases on rough and bumpy terrain.

It connects to 48mm scaffold tube or 150mm pole system and has a 180° horizontal adjustment range. The front Mitchell mount can be set for under or over slung use of the stabilized head. The best results are achieved when used with the Iso Dampener.

The Maxi Shock Absorber allows for individual adjustment and setting, depending on the choice of stabilized head and taking into consideration the terrain of the shooting environment.



SOUTHERN BROTHERS TRACKING

Unit 14, Hydro Park, 1 Hydro St, Stickland, Cape Town.

Technical: Calvin: +27 81 734 8575

Bookings/Accounts: Daryl: +27 76 147 7641

info@southernbrothers.co.za

www.southernbrothers.co.za



CLEARCOM WIRELESS COMMUNICATIONS



The HME DX100 Wireless intercom system delivers crystal-clear, two-way communications in a compact, portable base station. Hands-free mode allows maximum flexibility, and a secure channel ensures that private conversations stay private.

Each base station can have up to fifteen Beltpacs "registered" to it. Four of the fifteen Beltpacs can transmit at the same time. Beltpacs can be used either in the push-to-talk or hands-free mode. The base station operator can stop any Belt pack from transmitting.

The base station can be operated using standard AC electricity, an external DC power source or six AA batteries. A power supply, cable and a battery charging sled are included with the base station.



SOUTHERN BROTHERS TRACKING

Unit 14, Hydro Park, 1 Hydro St, Stickland, Cape Town.

Technical: Calvin: +27 81 734 8575

Bookings/Accounts: Daryl: +27 76 147 7641

info@southernbrothers.co.za

www.southernbrothers.co.za



SMALL HD MONITORS



The Smart HD On-Camera Monitor is not only very bright but also very sharp with a Full HD 1080p display and 1000:1 contrast ratio. Moreover, the LCD features optically bonded glass with anti-reflective coating. All this adds up to highly accurate daylight visibility and high image quality, on a fairly large 7" screen. In addition, it is housed in an aircraft grade aluminium unibody and has a slim and trendy design. The design also offers an industry-first battery support solution -- dual integrated battery plates each support both Sony L-Series and Canon LP-E6 batteries. It offers HD-SDI and HDMI inputs and outputs, as well as a headphone jack for monitoring audio. It also has a store of monitoring features, including Waveform, custom LUT support, anamorphic de-squeeze, and audio meters.

Southern Brothers have two monitors available with eight batteries and one direct 12v feed. Supplied in a hard pelican case.



SOUTHERN BROTHERS TRACKING

Unit 14, Hydro Park, 1 Hydro St, Stickland, Cape Town.

Technical: Calvin: +27 81 734 8575

Bookings/Accounts: Daryl: +27 76 147 7641

info@southernbrothers.co.za

www.southernbrothers.co.za



TOW-RIG OPTIONS



Telescopic I-BEAM

- Max Length: 3400 mm
- Min Length: 1030 mm
- Max Load: 4000 Kg
- Platform: 355 mm X 555 mm



Universal A-Frame

- Max Length: 1800 mm
- Width: Universal
- Max Load: 4000 Kg

We also have various other custom rigs available and are always willing to fabricate client specific options if required .



SOUTHERN BROTHERS TRACKING

Unit 14, Hydro Park, 1 Hydro St, Stickland, Cape Town.

Technical: Calvin: +27 81 734 8575

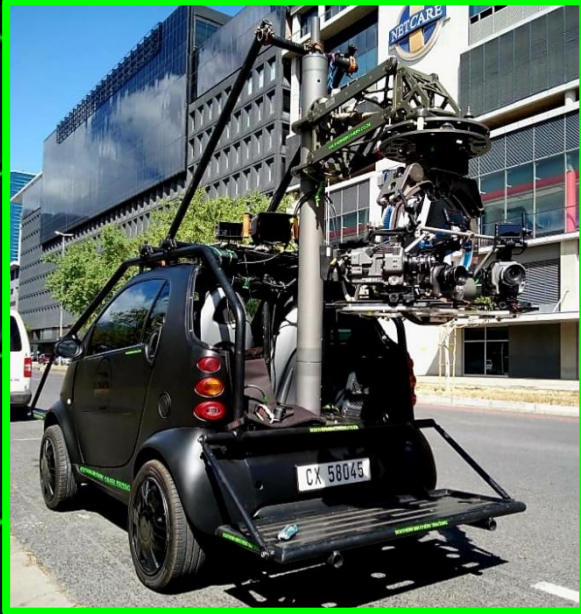
Bookings/Accounts: Daryl: +27 76 147 7641

info@southernbrothers.co.za

www.southernbrothers.co.za



GEM 6FT POLE MOUNT SYSTEM



Our 6Ft Pole Mount System from Grips Factory Munich sets the bar when shooting with a Hard-Mount Setup. Working in conjunction with our Maxi Vibration Isolator it has a payload compacity of up to 100KG.

The Pole Mount offers the user 180° pan adjustment alongside 6ft of height adjustment from the mounting point on the vehicle. The Mount is super user friendly and all adjustments to the camera position can generally be achieved within five minutes, with no additional balancing required.

Currently available as a package on our Kawasaki Teryx ATV, 400cc Cricket Quad, Ford F250 4X4 and Smart Compact Tracking Car.



SOUTHERN BROTHERS TRACKING

Unit 14, Hydro Park, 1 Hydro St, Stickland, Cape Town.

Technical: Calvin: +27 81 734 8575

Bookings/Accounts: Daryl: +27 76 147 7641

info@southernbrothers.co.za

www.southernbrothers.co.za



LOW-LOADER BIKE PROCESS TRAILER



Our Low-Loader Bike Trailer, is perfect for process work with both motorbikes and bicycles. With a load capacity of up to 500Kg and a ground clearance of just 8 inches. The trailer can be supplied with two side platforms to increase the working area if required. Various lockdown points are available, and it is fully licenced and insured to operate on the national roads.



SOUTHERN BROTHERS TRACKING

Unit 14, Hydro Park, 1 Hydro St, Stickland, Cape Town.

Technical: Calvin: +27 81 734 8575

Bookings/Accounts: Daryl: +27 76 147 7641

info@southernbrothers.co.za

www.southernbrothers.co.za



NISSAN PATHFINDER 4x4 SUV



The ultimate support vehicle on all terrain. Offering high and low range 4x4 options, aftermarket raised suspension for additional clearance and custom tow-bar with motorbike carrier.

Suitable for most locations, seats up to seven passengers. Rear seats are fold-able to increase load space. All round work horse on set with a towing capacity of up to 2.5 tons.



SOUTHERN BROTHERS TRACKING

Unit 14, Hydro Park, 1 Hydro St, Stickland, Cape Town.

Technical: Calvin: +27 81 734 8575

Bookings/Accounts: Daryl: +27 76 147 7641

info@southernbrothers.co.za

www.southernbrothers.co.za



SPECIFICATIONS

Kawasaki Teryx ATV:

- Height: 1940 mm (Excluding Rigging)
- Width: 1750 mm
- Length: 3220 mm (Excluding Platforms)
- Length: 4530 mm (Including Platforms)
- Platforms: 1460 mm X 680 mm (2X)
- Max Speed: 60 Km/h
- Max Crew: 6 Pax (Including Driver)

Cricket Tracking Quad:

- Height: 1300 mm (Excluding Rigging)
- Width: 1270 mm
- Length: 1920 mm (Excluding Platforms)
- Length: Variable (including Platforms)
- Platforms: Variable
- Max Speed: 60 Km/h
- Max Crew: 3 Pax (Including Driver)

Augusta E-Cart

- Height: 1600 mm (Excluding Rigging)
- Width: 1300 mm
- Length: 2310 mm (Excluding Platforms)
- Length: 3085 mm (including Platforms)
- Platforms: F: 300 mm X 420 mm B: 1080 mm X 475 mm
- Max Speed: 25 Km/h
- Max Crew: 4 Pax (Including Driver)

Mercedes Smart Compact:

- Height: 1640 mm (Excluding Rigging)
- Width: 1550 mm
- Length: 2700 mm (Excluding Platforms)
- Length: 3800 mm (including Platforms)
- Platforms: 550 mm X 1340 mm (2X)
- Max Speed: 80 Km/h
- Max Crew: 5 Pax (Including Driver)



SOUTHERN BROTHERS TRACKING

Unit 14, Hydro Park, 1 Hydro St, Stickland, Cape Town.

Technical: Calvin: +27 81 734 8575

Bookings/Accounts: Daryl: +27 76 147 7641

info@southernbrothers.co.za

www.southernbrothers.co.za



SPECIFICATIONS

Opal Tigra Plate Car:

- Height: 1080 mm (Excluding Rigging)
- Width: 1620 mm
- Length: 3900 mm
- Max Speed: 140 Km/h
- Max Crew: 1 Pax (Including Driver)

Ford F250 Double Cab 4X4:

- Height: 2220 mm (Excluding Rigging)
- Width: 2180 mm (Excluding Mirrors)
- Length: 6500 mm (Excluding Platforms)
- Length: Variable (including Platforms)
- Platforms: Variable
- Max Speed: 80 Km/h
- Max Crew: 6 Pax (Including Driver)
- Tow Capacity: 4500 Kg

Low-Loader Bike Process Trailer:

- Height: 570 mm (Excluding Rigging)
- Width: 1900 mm
- Length: 2500 mm (Excluding Platforms)
- Length: 3530 mm (including Tow Beam)
- Platforms: Variable
- Max Speed: 80 Km/h
- Max Load: 750 Kg

Enclosed Car Trailer:

- Height: 2750 mm
- Width: 2400 mm
- Length: 7050 mm
- Max Speed: 100 Km/h
- Max Load: 3500 Kg



SOUTHERN BROTHERS TRACKING

Unit 14, Hydro Park, 1 Hydro St, Stickland, Cape Town.

Technical: Calvin: +27 81 734 8575

Bookings/Accounts: Daryl: +27 76 147 7641

info@southernbrothers.co.za

www.southernbrothers.co.za



PRICE GUIDE 2024/2025

➤ Kawasaki Teryx Tracking ATV:	From: R15 000 p/d
➤ Smart Car Tracking Vehicle:	From: R12 000 p/d
➤ Ford F250 4X4 Tracking Vehicle:	From: R12 000 p/d
➤ Cricket 400cc Tracking Quad:	From: R8 000 p/d
➤ Augusta Electric Tracking Cart:	From: R8 000 p/d
➤ Opel Tigra Plate Car:	From: R15 000 p/d
➤ Studio Electric Cart:	From: R5 000 p/d
➤ Ford F250 4X4 and Enclosed Support Trailer:	From: R2 000 p/d
➤ Nissan Pathfinder 2.5Tdi 4X4 Support Vehicle:	From: R2 000 p/d
➤ Predator III Crane System:	From: R6 000 p/d
➤ DX100 Wireless Communications (5 Headsets):	From: R2 000 p/d
➤ SmallHD Monitors:	From: R2 000 p/d
➤ Tow Rigs:	From: R2 500 p/d
➤ GFM Vibration Isolator:	From: R5 000 p/d
➤ GFM 6ft Pole Mount:	From: R4 000 p/d
➤ GFM 6ft Pole Mount & VI Package:	From: R8 000 p/d
➤ Bike Low Loader Trailer:	From: R7 500 p/d
➤ Tracking Supervisor:	From: R6 000 p/d
➤ Tracking Technician:	From: R4 500 p/d
➤ Jib Arm Swinger:	From: R5 000 p/d
➤ Precision Drivers:	From: R6 000 p/d



- These prices are for quick reference purposes only.
- CPA Rules apply to all invoices.
- Prices do not include transport or accommodation.
- Prices do not include fuel.
- Prices do not include crew, unless otherwise stated.
- Weekly and "Run a Show" deals available upon request.



SOUTHERN BROTHERS TRACKING

Unit 14, Hydro Park, 1 Hydro St, Stickland, Cape Town.

Technical: Calvin: +27 81 734 8575

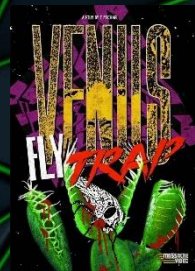
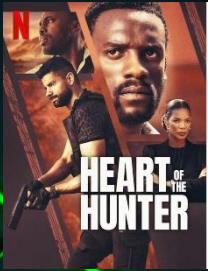
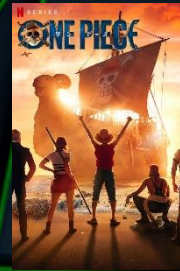
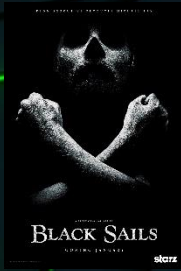
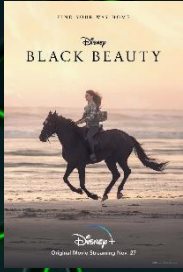
Bookings/Accounts: Daryl: +27 76 147 7641

info@southernbrothers.co.za

www.southernbrothers.co.za



C.V FEATURES



C.V COMMERCIALS



FIND US @



Find us on
facebook

Southern Brothers Tracking



FOLLOW US ON
Instagram

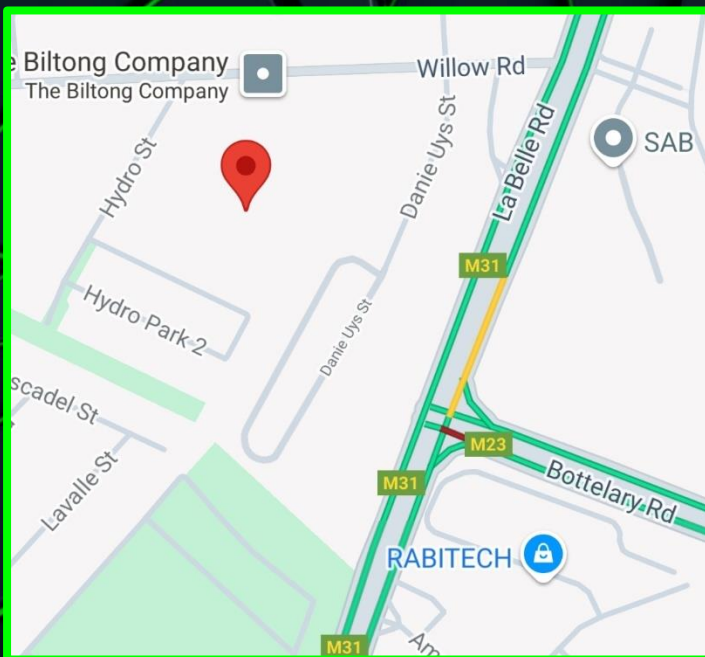
@southernbrotherstracking

FIND US ONLINE
OUR WEBSITE IS ALWAYS OPEN



www.southernbrothers.co.za

SOUTHERN BROTHERS TRACKING



Unit 14, Hydro Park, 1 Hydro St, Stickland, Cape Town.

Technical: Calvin: +27 81 734 8575

Bookings/Accounts: Daryl: +27 76 147 7641

info@southernbrothers.co.za

www.southernbrothers.co.za